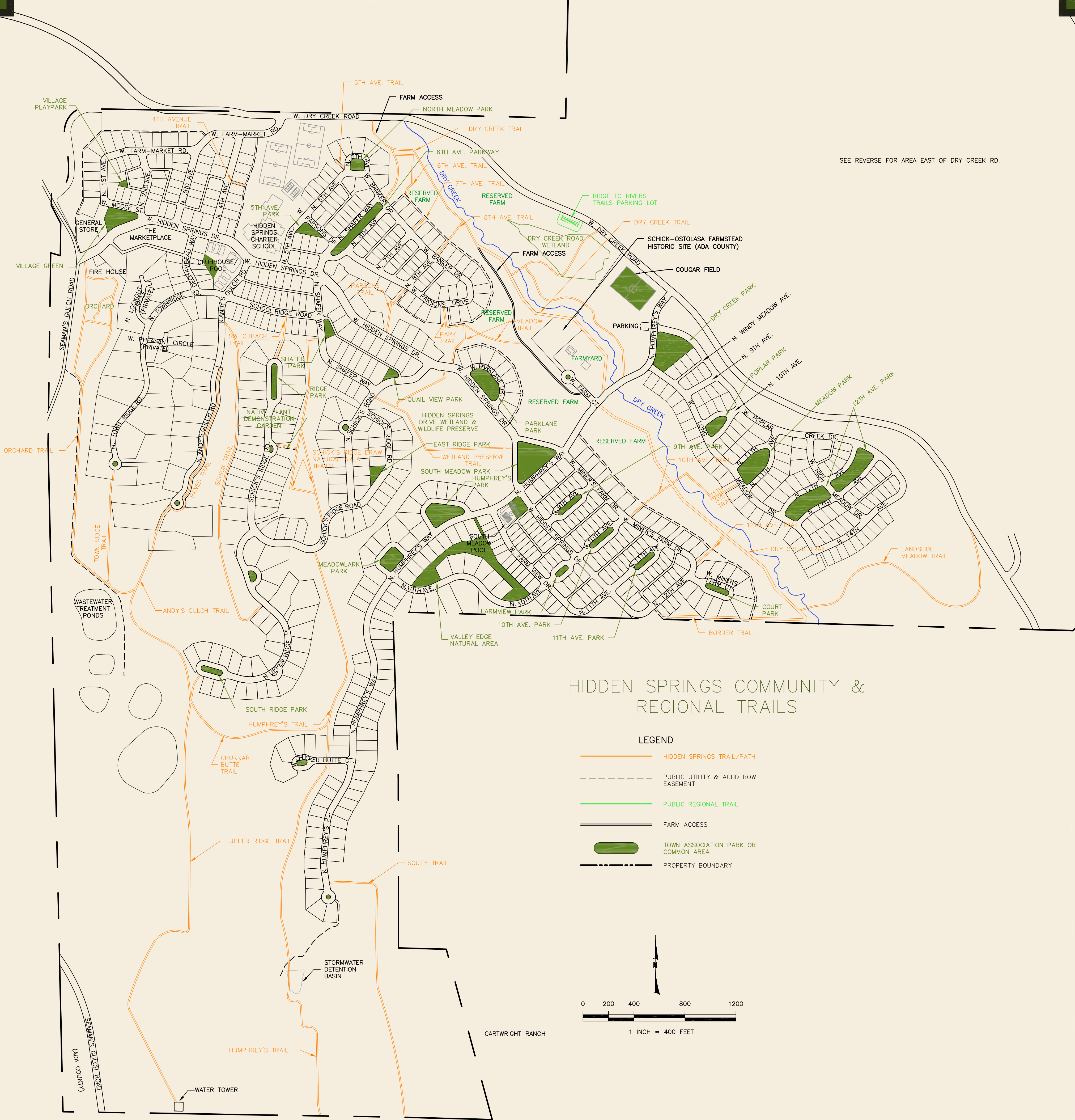


SEE REVERSE FOR AREA EAST OF DRY CREEK RD.



HIDDEN SPRINGS COMMUNITY & REGIONAL TRAILS

LEGEND

- HIDDEN SPRINGS TRAIL/PATH
- - - PUBLIC UTILITY & ACHD ROW EASEMENT
- PUBLIC REGIONAL TRAIL
- FARM ACCESS
- TOWN ASSOCIATION PARK OR COMMON AREA
- - - PROPERTY BOUNDARY

Note: All trail locations are approximate. Hidden Springs Town Association retains the right to change trail locations as necessary, without prior notification. May 2012

OWNER
HIDDEN SPRINGS TOWN ASSOCIATION
 5890 HIDDEN SPRINGS DRIVE
 HIDDEN SPRINGS, ID 83714
 PHONE: (208) 229-2323
 FAX: (208) 229-2327



RIVERIDGE ENGINEERING CO.
 2247 S. VISTA AVE.
 BOISE, IDAHO 83705
 PHONE: (208) 344-1180
 FAX: (208) 344-1182